

# THE BEST CAMERA FOR INDOOR MONITORING

HIGH RESOLUTION INTERIOR DOME CAMERA  
L2104-D



L2104-D (Black)



## 540TV LINES HIGH RESOLUTION & 0.05 LUX LOW ILLUMINANCE

L2104-D is a 540TV line high resolution dome camera with 0.05 lux of low illuminance, which provides clear images even in low-light indoor places.



Conventional



540TVL



## 3.6mm LENS FOR INDOOR MONITORING

With its 3.6mm lens, L2104 -D can properly monitor indoor spaces such as elevators and stores. It can be installed in other indoor environments with 2.5mm or 6.0mm lens.



Elevator Scene



Retail Scene



## OUTSTANDING DIGITAL DAY & NIGHT

Color mode is set in daytime and automatically switches to black and white mode at night to monitor dark indoor space with optimal picture quality.



DAY



NIGHT



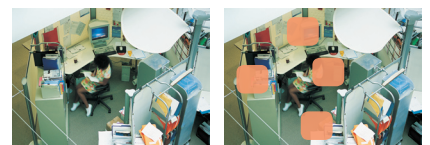
## 3-AXIS MECHANISM

L2104-D's three-axis mechanism lets the user install the camera at any angle for more flexible and convenient installation.



## 4 PRIVACY ZONES MASKING

The user can set L2104-D at any of four privacy masking zones for variable degrees of privacy



4 Privacy Zones Masking



L2104-D (White)



# EASY AND CONVENIENT INSTALLATION ANYWHERE

## DOME CAMERA L2104-D

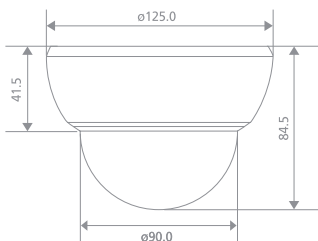


### SPECIFICATIONS

| Model                            | L2104-DN  | L2104-DP           |
|----------------------------------|---|--------------------|
| Signal System                    | NTSC  | PAL                |
| Total Pixels No.                 | 410K  | 470K               |
| Imaging Device                   | 6.0mm (1/3 Type) Sony CCD                           |                    |
| Lens                             | 3.6mm Fixed Lens (Option = 2.5/6mm)                 |                    |
| Sync. System                     | Internal / Line Lock (Opt)                          |                    |
| Scanning Frequency (H/V)         | 15.734 KHz / 59.94 Hz                               | 15.625 KHz / 50 Hz |
| Horizontal Resolution            | 540TV Lines   |                    |
| S/N Ratio                        | 48dB  |                    |
| Minimum Illumination (30 IRE)    | 0.05 Lux (Color Mode, F1.2)                         |                    |
| Control Method                   | Inner Set SW  |                    |
| Video Output Signal              | 1Vp-p Composite (75Ω)                               |                    |
| Day & Night (Digital)            | On / Off  |                    |
| Backlight Compensation           | BLC / HSBLC / LSC                                   |                    |
| Auto Gain Control                | Auto  |                    |
| Electronic Shutter Speed         | 1/60 ~ 1/100,000                                    | 1/50 ~ 1/100,000   |
| White Balance                    | Auto (2,500°k ~ 9,500°k)                            |                    |
| Horizontal Image Conversion      | On / Off  |                    |
| Vertical Image Conversion        | On / Off  |                    |
| Motion Detection                 | On / Off  |                    |
| Privacy Zone Masking             | 4 Zones   |                    |
| Multi OSD Language               | 2 Languages   |                    |
| Power Source                     | DC 12V  |                    |
| Power Consumption                | Max 1.3 W   |                    |
| Operating Temperature / Humidity | -10°C ~ 50°C / 0% ~ 80%RH (Non-Condensing)          |                    |
| Storage Temperature / Humidity   | -20°C ~ 60°C / 0% ~ 85%RH (Non-Condensing)          |                    |
| Weight                           | 0.21 kg   |                    |
| Dimension (Ø x H)                | Ø 125 x 84.5 mm                                     |                    |
| Accessory                        | Install Guide Sticker / Screw / Installation Manual |                    |

\* Exact products and specifications shown may vary by geographic region and are subject to change without notice. Actual products may differ from the images appearing in the catalog.

### DIMENSION



(Unit : mm)

### FEATURES

- 6.0mm (1/3 Type) CCD
- 540TV Lines
- Min. Illumination : 0.05 Lux (Color Mode, F1.2)
- 3-Axis Mechanism
- 3.6mm Fixed Lens
- Digital Day & Night
- 4 Privacy Zones Masking
- DC12V



The eco-friendly label is attached to those products which have passed LG Electronics' rigorous environmental criteria that evaluate 6 hazardous materials (lead, mercury, cadmium, etc.)



#### Business Solutions Company

**Security Business Team**  
 LG Twin Towers, 20 Yeouido-dong,  
 Yeongdeungpo-gu, Seoul 150-721, Korea  
 Phone : +82-2-3777-5184  
 Fax : +82-3777-5185  
<http://www.lg.com/global/security>  
 E-mail : lgsecurity@lge.com

